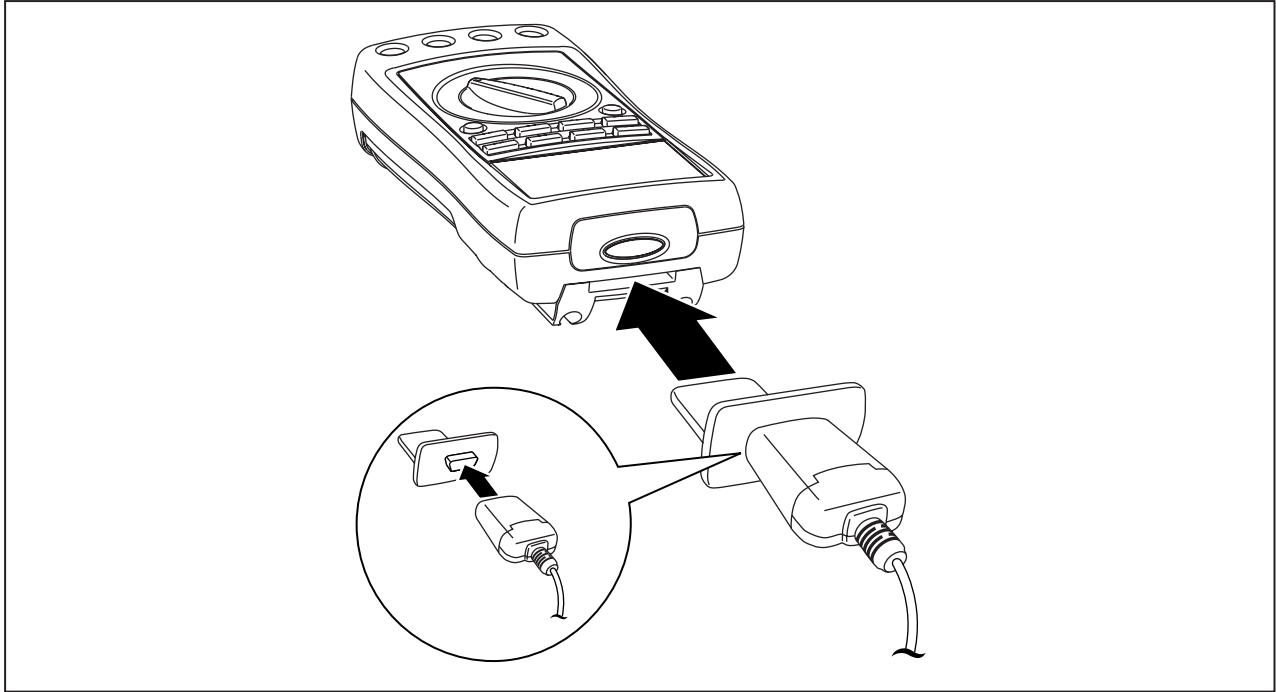


# FLUKE®

## FlukeView Forms

### Documenting Software

187 / 189 Meter Connection Page



zk02f.eps

#### Note

*Before the USB-IR cable can be used, software drivers must be installed on your Windows PC. See the USB-IR Cable Installation Instructions for more information.*

To connect the 187 / 189 meters to the PC for use with *FlukeView Forms Documenting Software*:

1. Connect the USB-IR cable to an available USB port on the PC.
2. Connect the IR device to the adapter provided.
3. Insert the adapter into the slot at the bottom of the meter, so that the IR device is against the IR window of the meter.
4. Open *FlukeView Forms Documenting Software*.
5. The current COM serial port setting is displayed at the bottom right of the *FlukeView Forms* window. Double-click on it to change the COM port setting to the virtual COM port used by the USB-IR cable.
6. Turn the meter on.
7. Follow the instructions for transferring data from the meter to the PC found in the online *Users Manual*.